

DRIVING COMMUNITY INVESTMENT IN OUR SCHOOLS



**REPORT** 08  
TO THE COMMUNITY 09

# DEAR SUPPORTERS OF DENVER PUBLIC SCHOOLS,

After four years of following The Denver Plan, the district's educational reform plan, DPS is making great progress. Once again last year, DPS students outpaced the average statewide gains on CSAP exams. From 2005 to 2009, DPS students have made gains in almost all content areas that far outpace statewide gains.

However, too many of our students are still not on track to graduate prepared for college or careers. Our challenge is to greatly accelerate the progress we are seeing to ensure all DPS students are receiving the education they need to build a successful future. To that end, the district is updating The Denver Plan to focus on the most critical areas that will drive student achievement.

Leadership at the DPS Foundation and the district are working more closely than ever to ensure that the tremendous community support for our schools is directed in the best way to achieve gains in student achievement and meet important needs for our students and schools.

**With your help,** we are extending the school day for thousands of students through after-school tutoring and enrichment programs, knowing that extended-learning opportunities provide not only a safe haven for our students during the after-school hours, but also valuable additional teaching time.

**With your help,** we are building a corps of principals steeped in the latest research on teaching and learning, enabling them to drive instructional excellence at their schools. National reports on school reform continue to emphasize the importance not only of teacher effectiveness, but also of entrepreneurial leadership of school principals.

**With your help,** we are putting resources directly into classrooms, ensuring that students have access to field trips, educational software and materials, specialized literacy programs, and much more.

Thank you so much for all your support for our schools and our children.

This is a truly critical time for our schools and our city. We must rise to meet the civil rights challenge of our generation: ensuring all of our students, regardless of ethnicity or income status, are graduating from our schools prepared for college or careers. Now is the time to speed up reforms, sharpen the focus on student achievement, and come together as a community to ensure our students have every opportunity to succeed.

We are deeply appreciative of the important role you are playing to make a positive impact on the lives of the 75,000 students in Denver Public Schools. We are up to the challenge, and we can't do it without you.



**Kristin Heath Colon**  
President & CEO  
DPS Foundation



**Tom Boasberg**  
Superintendent  
Denver Public Schools



**Kristin Richardson**  
Chair  
DPS Foundation

## OUR MISSION:

In partnership with Denver Public Schools, we raise and manage funds, make strategic program investments and serve as community leaders so that all students have the opportunity to succeed.

In 2008-2009 the DPS Foundation made investments in the following areas:

- **TEACHER & CLASSROOM SUPPORT** including funding of the district's elementary school science curriculum, mentors for new teachers, and a grant program for individual schools to fund field trips and classroom activities.
- **PRINCIPAL LEADERSHIP TRAINING** including ongoing professional development and mentoring programs for principals and assistant principals.
- **AFTER-SCHOOL & SUMMER PROGRAMS** that engage students in the arts, academics and athletics.

## OUR VISION:

In Denver Public Schools, outstanding educational achievements are the norm and all children have hope of a great future.

PHOTO BY REBECCA HOLT



# TEACHER AND CLASSROOM SUPPORT

THE DPS FOUNDATION GENERATES COMMUNITY SUPPORT TO ENSURE DPS ATTRACTS AND RETAINS HIGH-QUALITY TEACHERS AND PROVIDES CLASSROOMS WITH THE RESOURCES THEY NEED TO DRIVE STUDENT ACHIEVEMENT.

## NEW TEACHER PROGRAM

Funding for teacher mentoring ensured that all new educators in DPS received support from day one – because an effective teacher in every classroom is the most important factor in student success.

## SCIENCE CURRICULUM

With the support of our donors, the DPS Foundation completed a three-year funding commitment for the new elementary school science curriculum in 2009. The “Science Tracks” curriculum includes workbooks and hands-on materials needed for students to conduct experiments and act like real scientists. The implementation of Science Tracks represents the first time DPS has had a standard, district-wide science curriculum at the elementary school level.



### THE NUMBERS

DPS WELCOMED 505 NEW EDUCATORS IN THE 2008-2009 SCHOOL YEAR.

PHOTO BY ANNA BECKER

## A TO Z FUND

Through the A to Z Fund, the DPS Foundation provides money to schools throughout the district for classroom materials, enrichment programs and field trips that cannot be supported through schools' limited budgets. The A to Z Fund ensures that all students have access to rich learning opportunities.

## A TO Z FUND HELPS BUILD STUDENT'S VOCABULARY, DREAMS

Merrill Middle School used A to Z funding to provide an after-school program that builds students' vocabulary and literacy skills. The school has a magnet program for newly arrived refugee and immigrant students from all over the world, and most of those students speak little or no English.

Fikir was one student who participated in the program. She was a refugee from Somalia. Her teacher, Michael Bash, reported on her tremendous progress thanks to this program:

During Fikir's first day in the program, she declared, "I can't do that. I don't know how to spell." That self-doubt was

replaced within two weeks with increased self-confidence as her vocabulary grew. In her social studies class she submitted the only paper awarded a four for proficiency in understanding and writing about the U.S. Constitution. Over eight weeks, her aspirations matured from wanting to get good grades, to wanting to qualify for mainstream classes in high school, to aspiring to be a writer, and finally to planning to open a school for orphaned children in her Somali homeland. Fikir transitioned from using the formal Somalian parting from friends, "Maybe I'll see you again" to saying, "See you next time." In America, she learned she could count on life continuing tomorrow.



### THE NUMBERS

THE DPS FOUNDATION AWARDED MORE THAN \$137,000 IN A TO Z FUND GRANTS IN 2008-2009, BENEFITING 77 SCHOOLS.

PHOTO BY GUSTAVO GARCIA

# PRINCIPAL LEADERSHIP TRAINING

RESEARCH SHOWS THAT A PRINCIPAL'S ABILITY TO OVERSEE AND ENSURE HIGH-QUALITY TEACHING AND LEARNING IN EACH CLASSROOM IS A CRITICAL DRIVER OF STUDENT ACHIEVEMENT.

The DPS Foundation supports the annual summer Principals Institute, year-long leadership training, and mentors for new principals. These programs give school leaders the tools and support they need to succeed and to implement effective reform in their schools.

“

My first year as a principal, people didn't know each other. The first institute was absolutely monumental. Now principals receive common content together and brainstorm how to roll out new plans to our teachers. Through the institutes, people build relationships. Now you can pick up the phone and share information with other principals. I'm not sure I could have continued after my first two years as a principal without the institutes.

”

-Shannon Hagerman, principal  
Montclair School of Academics & Enrichment

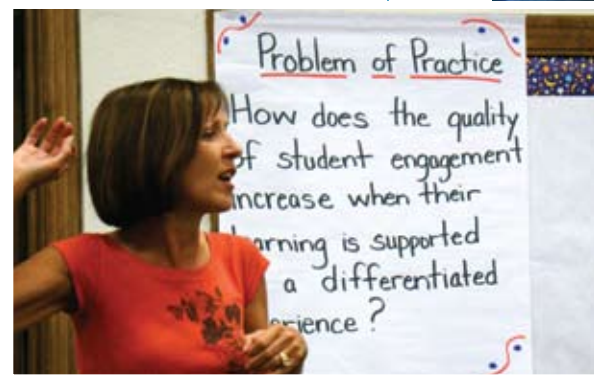


PHOTO BY ANNA BECKER

# AFTER-SCHOOL & SUMMER PROGRAMS

STUDIES SHOW THAT TIME SPENT OUTSIDE OF SCHOOL CAN BE AN OPPORTUNITY FOR STUDENTS TO CONTINUE LEARNING, IMPROVE GRADES AND SCHOOL ATTENDANCE, AND DEVELOP SOCIAL SKILLS.

With the support of our donors, the DPS Foundation funded after-school tutoring and enrichment programs at schools district-wide, as well as a summer camp.

These programs not only expand educational opportunities for our students, but they keep students safe and engaged when they may otherwise be unsupervised.

## TUTORING PROGRAMS

Thanks to generous community support, we provided funding for 69 schools to offer supplemental tutoring to approximately 3,300 struggling students in 3rd through 10th grade.

“

I was failing some classes and was able to catch up during after-school tutoring and Saturday school. If I had to go an extra semester or year to make up those credits I would have dropped out of school. Now I'm going to graduate this spring and I want to become a police officer.

”

– Diana, student  
Bruce Randolph



### THE NUMBERS

STUDENTS RECEIVING TUTORING OUT-PERFORMED SIMILAR DPS STUDENTS WHO DID NOT RECEIVE THE INTERVENTION.

- The percentage of students scoring proficient or advanced on CSAP in writing **grew by 12.6%** among tutoring participants, **compared with an increase of 7.2%** among the control group who did not receive tutoring.
- Students scoring proficient or advanced on CSAP reading exams **increased by 2.2%** among tutoring participants, **compared to an increase of 0.8%** among non-participants.

PHOTO BY GUSTAVO GARCIA

## AFTER-SCHOOL ENRICHMENT PROGRAMS

DPS Foundation donors fund a variety of after-school enrichment programs in DPS elementary and middle schools including art clubs, music and dance classes, technology programs, foreign language courses, science programs, sports, chess clubs and much more!

### THE NUMBERS

- During the 2008-2009 school year, more than 7,000 students participated in after-school enrichment programs funded through the Lights on After School partnership between the **DPS Foundation**, the **City and County of Denver** and **Mile High United Way**.
- Approximately 400 students from high-poverty schools participated in the Fit Fun and Literacy after-school program.
- A study of DPS after-school sites reported that the dropout rate for students who participated in after-school activities was five percent lower than the dropout rate of non-participants. The study also revealed that after-school participants had higher school-day attendance than non-participants.



**The after-school Athletic Club, Tutoring Club, and Technology Club continue to serve as an integral part of our learning environment and social culture. Our programs have made a significant impact on student achievement over the last four years as evidenced by our CSAP scores. Our three clubs continue to provide our students with a well-balanced educational experience that meets the needs of the whole child and prepares them for lifelong learning and success.**



- Frank Roti, principal  
Beach Court Elementary



### THE NUMBERS

**MORE THAN 3,600 STUDENTS AT 31 SCHOOLS PARTICIPATED IN PREP LEAGUE IN 2008-2009.**

**PREP LEAGUE OFFERS 10 DIFFERENT SPORTS ACROSS THREE SEASONS.**

PHOTO COURTESY OF DENVER BRONCOS

## SUMMER PROGRAMS

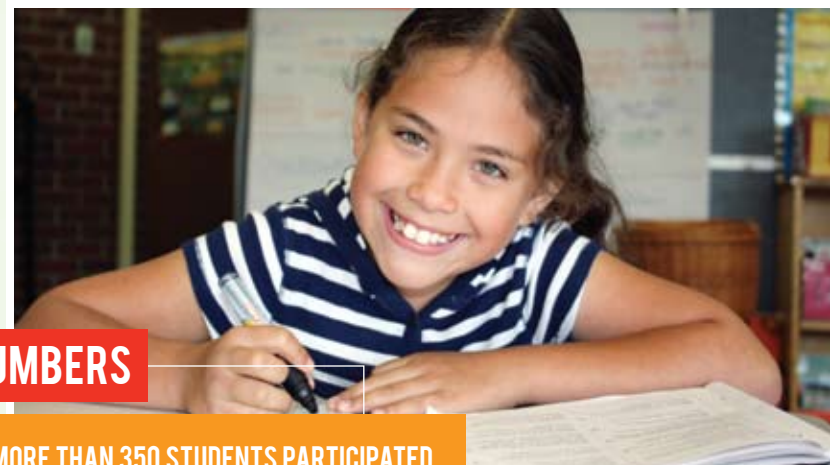
Once again, the DPS Foundation raised funding for Denver Camp, a six-week summer enrichment program designed to provide fun, educational programming for students from low-income or homeless families who may not otherwise have access to summer camps.



**Two-thirds of the achievement gap between lower- and higher-income youth can be explained by unequal access to summer learning opportunities.**



-The Center for Summer Learning



### THE NUMBERS

**MORE THAN 350 STUDENTS PARTICIPATED IN DENVER CAMP IN 2009.**

PHOTO BY JUDY SCHIFF

## PREP LEAGUE SPORTS

It is only through the generous support of our community that middle school students in DPS have the opportunity to play competitive, after-school sports. The Prep League program not only develops students' athletic skills, but also requires participants to maintain high grades, regular attendance and good behavior in order to play in each week's game.

### NEW! PREP LEAGUE ADDS TACKLE FOOTBALL

For the first time in 2009, DPS middle school students had the opportunity to play competitive tackle football after school— thanks to generous support from **Denver Broncos Charities** and the **National Football League**.

Grants from these organizations funded the new "Futures League" for students in seventh and eighth grades. Approximately 300 students participated.

With the addition of the Denver Broncos Futures League, Denver leads the nation in the number of professional sports teams supporting a middle school sports program. **The Colorado Rockies** have supported Prep League since 2007, and **Kroenke Sports**, owner of the Nuggets and Avalanche, has sponsored Prep League since 2004.

# SCHOOL PARTNERS PROGRAM

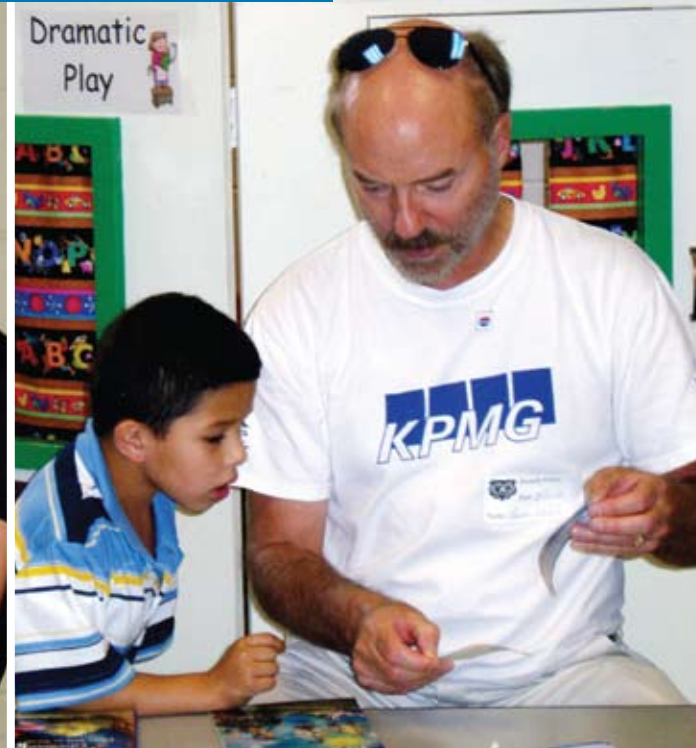
With generous funding from the **Qwest Foundation**, the School Partners Program has cultivated numerous long-term partnerships between DPS schools and Denver businesses. Partners have provided volunteer time, in-kind contributions and financial resources to meet the specific needs of their schools.

Thanks to a three-year commitment of seed money from Qwest, along with initial funding from the **Daniels Fund**, the School Partners Program has been firmly established and is now a part of Denver Public Schools' Office of Community Engagement.

## THE NUMBERS

IN 2008-2009, 44 BUSINESSES WERE DPS SCHOOL PARTNERS.

LEFT: AVMusic and Drive Time donated school supplies to Colfax Elementary  
RIGHT: KPMG employees provide Barnum students with books



# ADDITIONAL DISTRICT SUPPORT

EACH YEAR, THE DPS FOUNDATION SERVES AS THE FISCAL AGENT AND STEWARD OF NUMEROUS GIFTS THAT PROVIDE CRITICAL SUPPORT TO THE SCHOOL DISTRICT, IN ADDITION TO OUR PRIMARY INITIATIVES. THESE GIFTS SUPPORT MANY PROGRAMS THAT DRIVE STUDENT ACHIEVEMENT, AND HELP THE DISTRICT IMPROVE TEACHING AND LEARNING.

## ENGLISH LANGUAGE ACQUISITION ACADEMY

Funded through **The Denver Foundation**, the English Language Acquisition Academy provides four weeks of additional instruction to English language learners in first through fourth grades during the summer, providing students with additional help in literacy during the school break.

## DENVER TEACHER RESIDENCY

The Janus Education Alliance (JEA), a partnership funded by **Janus**, is a cornerstone in DPS' efforts to recruit, prepare and retain high-quality urban educators. JEA funding contributed significantly to the development and launch of the Denver Teacher Residency (DTR), an innovative, hands-on teacher preparation program that cultivates and supports exceptional teachers in high-needs DPS schools. Resident teachers apprentice in DPS classrooms while earning a master's degree from the University of Denver. In 2009 DTR recruited its first class of 27 residents.

## PERFORMANCE MANAGEMENT INITIATIVE

The district began implementing the Performance Management Initiative in the 2008-09 school year. The goal: to advance student achievement through the increased and improved use of

data by decision-makers. Underwritten by grants from **Michael & Susan Dell Foundation** and **The Eli & Edythe Broad Foundation**, the project consists of web-based portals for teachers that provide information on student achievement, discipline, attendance, and program enrollment, all from one central site. The administrator portal has all this information, as well as teacher attendance data and operational reports. The district also initiated a more robust goal-setting and evaluation system for staff members.

## THE NEW TEACHER PROJECT MODEL STAFFING INITIATIVE

With the support of the **Daniels Fund**, DPS partnered with The New Teacher Project to increase schools' capacity to recruit and retain highly effective teachers. The New Teacher Project assisted 25 of DPS' highest-needs schools by training principals on best practices in teacher staffing, doing targeted recruitment, assisting in screening teacher candidates, and working to ensure all the teaching vacancies in these schools were filled with high-quality teachers prior to the start of the school year.

## PROMETHEAN BOARDS

**Morgridge Family Foundation** helped DPS classrooms leap forward in their use of technology, generously

funding 173 Promethean Boards in 53 schools. These interactive whiteboards allow teachers to engage students with curriculum in new ways. Like a huge touch-screen computer in the classroom, a Promethean Board provides powerful instructional tools that transform traditional classrooms into 21st century learning environments. Additionally, the Morgridge Family Foundation supported the purchase of 17 sets of ActiVote hand-held devices and 49 sets of ACTIVEExpression devices that allow students to complete quizzes and respond to questions—providing fast and valuable information to their teachers.



**The Promethean Board engages my students in completely new ways. Not only are the students grasping the content, behavior problems have disappeared because students are so excited about participating in their own learning.**



— Denise Mongeau, DPS teacher

# 2009 ACHIEVE GALA RAISED \$900,000 FOR STUDENT ACHIEVEMENT

THE 2009 "ACHIEVE" GALA ATTRACTED MORE THAN 1,200 GUESTS AND RAISED \$900,000 TO SUPPORT A WIDE RANGE OF PROGRAMS TO IMPROVE STUDENT ACHIEVEMENT.

Key supporters of the gala included presenting sponsor **UMB** and event sponsors **Comcast, Tiffany & Co., Denver Post Community**, and the **Hyatt Regency Denver at the Colorado Convention Center**, where the event was held. Valedictorian-level sponsors were **Marcy & Bruce Benson, Morgridge Family Foundation, Martha Records & Rich Rainaldi, Kristin & Blair Richardson, Rockmont Capital Partners, Ltd., Salazar Family Foundation**, and **United Launch Alliance**.

**Rob Cohen**, chairman and CEO of The IMA Financial Group, Inc. served as chair of the event, with **Governor Bill Ritter** and **Mayor John Hickenlooper** serving as honorary co-chairs. The evening featured remarks from DPS Superintendent

Tom Boasberg and North High School senior Isaac Solano, as well as a video greeting from U.S. Senator and former DPS Superintendent Michael Bennet.

Student volunteers from the DPS Student Board of Education, Cheltenham Elementary, Cory Elementary, Fairview Elementary, Rachel B. Noel Middle School, Teller Elementary and Valdez K-8 School greeted guests as they arrived. The highlight of the evening was a variety of student performances, including the Denver Citywide Marching Band, Traylor Academy "Roar of the Tiger" choir, the Green Valley Elementary Grizzlies Step Team, and the Denver School of the Arts Sinfonia.

LEFT: Lt. Gov. Barbara O'Brien, Gov. Bill Ritter, DPS Foundation CEO Kristin Colon and students from Garden Place Academy

RIGHT: Mayor John Hickenlooper and North High School student Isaac Solano

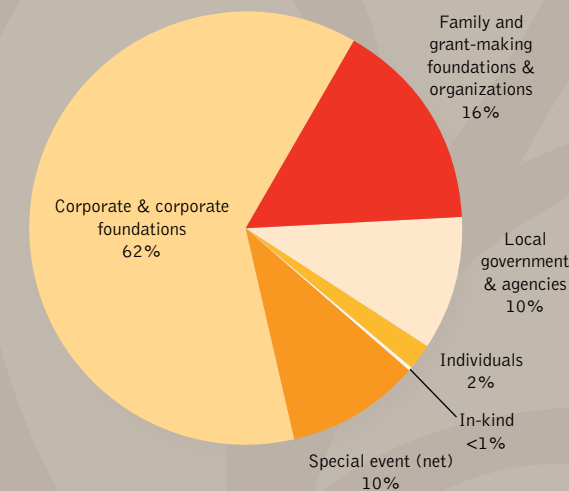
PHOTOS BY DAVE ANDERSON - BACKCOUNTRY IMAGES



# STATEMENT OF ACTIVITIES AND CHANGE IN NET ASSETS

FISCAL YEAR ENDED JUNE 30, 2009

## TOTAL REVENUES



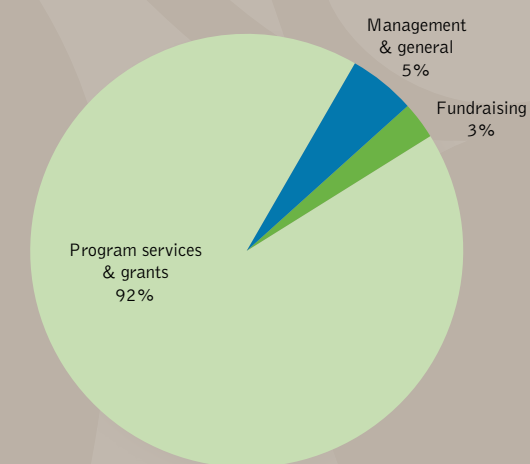
## REVENUES, GAINS AND OTHER SUPPORT:

Contributions:

Corporate & corporate foundations . . . . .	\$4,135,000
Family and grant-making foundations & organizations . . . . .	1,031,000
Local government & agencies . . . . .	.642,000
Individuals . . . . .	.142,000
In-kind . . . . .	.31,000
Special event (net) . . . . .	.675,000
Investment income . . . . .	(20,000)

**Total revenue, gains and other support . . . . . \$ 6,636,000**

## TOTAL EXPENSES



## EXPENSES:

Program services & grants . . . . .	\$7,967,000
Management & general . . . . .	419,000
Fundraising . . . . .	289,000

**Total expenses . . . . . \$8,675,000**

Change in net assets . . . . . \$(2,039,000)

Net assets, beginning of year . . . . . 8,392,000

**Net assets, end of year . . . . . \$ 6,353,000**

Denver Public Schools Foundation received an unqualified opinion by independent auditors Kundinger, Corder & Engle, P.C. for the year ended June 30, 2009. The complete Independent Auditor's Report on Financial Statements is available upon request.

# SPECIAL THANKS TO OUR DONORS

(GIFTS 7/1/08-6/30/09)

## \$500,000 or more

The Anschutz Foundation  
The Eli and Edythe Broad Foundation  
The Michael and Susan Dell Foundation  
The Denver Foundation  
Janus  
Morgridge Family Foundation

## \$200,000 to \$499,999

City and County of Denver  
Daniels Fund

## \$100,000 to \$199,999

Kroenke Sports Enterprises  
Qwest Foundation  
McCormick Foundation  
•Colorado Rockies Charity Fund  
•Denver Post Charities  
Mile High United Way  
Thomas W. Gamel  
Salazar Family Foundation

## \$25,000 to \$99,999

Marcy & Bruce Benson  
Carson Foundation  
Comcast  
Denver Broncos Charities  
Cathey & Richard Finlon  
Hyatt Regency Denver at Colorado Convention Center  
JPMorgan Chase  
Kaiser Foundation Health Plan of Colorado  
Margot & Marc Pinto  
The Leon & Lillian Ramo Charitable Fund, a donor advised fund of The Denver Foundation  
Martha Records & Rich Rainaldi  
Kristin & Blair Richardson  
Kim & Rob Roberts  
Sutherland Foundation, Inc.

UMB  
United Launch Alliance  
U.S. Bank  
Wells Fargo  
Westerra Credit Union

## \$10,000 to \$24,999

Cynda & Marcel Arsenaull  
Bessemer Trust  
BTG Family Foundation  
The Campbell Foundation, a donor advised fund of The Denver Foundation  
Sara & Scott Carpenter  
Cheeryble Fund, a donor advised fund of The Denver Foundation  
Chevron Energy Solutions  
Comcast Foundation  
Community Banks of Colorado  
Concerts for Kids  
Davis Graham & Stubbs LLP / Les Woodward  
ECA Foundation  
EnCana Oil & Gas (USA) Inc.  
Exempla Saint Joseph Hospital  
FirstBank  
Elaine Gantz Berman & Steve Berman  
Gary-Williams Energy Corporation  
Hogan & Hartson, LLP  
The IMA Financial Group, Inc.  
Independence Capital Asset Partners, LLC  
Kiewit Building Group, Inc.  
KM Concessions / Mary & Kevin McNicholas  
J.F. Maddox Foundation  
Timothy & Bernadette Marquez Foundation  
M.D.C. / Richmond American Homes Foundation  
David and Laura Merage Foundation  
Susan Morrice & Alex Cranberg  
Newmont Mining Corporation

Riverfront Park Community Foundation  
Mary & Jeff Ross  
Tiffany & Co.  
The UPS Foundation  
Whole Foods Market  
Xcel Energy

## \$5,000 to \$9,999

Anadarko Petroleum Corporation  
Jana & Fred Bartlit  
Baseball Tomorrow Fund  
BBVA Compass Bank  
Barbara & Daniel Berv  
The Butler Family Fund, a donor advised fund of The Denver Foundation  
Colorado & Santa Fe Real Estate Company  
Susan Daggett & Michael Bennet  
Cathey & Peter Dea  
Denver Classroom Teachers Association  
Beth Frye Strickland & Thomas L. Strickland  
George K. Baum & Company  
William Gold  
Grant Thornton LLP  
Great West Life & Annuity Insurance Company  
Kinder Morgan Foundation  
Kutak Rock LLP  
The Hugh & Patricia McClearn Fund, a donor advised fund of The Denver Foundation  
MillerCoors  
Leslie Mitchell  
Montclair Elementary PTA  
The National Christian Foundation  
Robinson Dairy  
Saunders Construction  
Judy & Rick Schiff  
Anna and John J. Sie Foundation  
The Sprout Foundation

Suncor Energy (U.S.A.) Inc.  
White Construction Group  
The Williams Foundation

## \$1,000 to \$4,999

Anonymous (2)  
Liz Adams & Charles Leonard  
Gerald L. Anderson  
The Bawmann Group  
Bayless Charitable Fund, a donor advised fund of The Denver Foundation  
Benefit Mall  
Joe B. Blake  
BNY Mellon Wealth Management  
Bookhardt & O'Toole  
Brownstein Hyatt Farber Schreck  
Busse Family Foundation  
Cherry Creek North Neighborhood Association  
The Chotin Foundation  
Chuck Wells & Associates  
Clifton Gunderson, LLP  
Denise & Warren Cohen  
Kristin & Eric Colon  
Colorado Business Bank  
The Colorado Health Foundation  
Colorado State Bank and Trust  
Continuum Partners LLC  
Delta Dental of Colorado  
Denver Health Foundation  
Denver Kids, Inc.  
Denver Public Schools Instructional Specialists  
Denver Public Schools Instructional Superintendents  
Christine A. DeRose  
Rosemary & Gary Desmond  
DPC Development Company  
EI Pomar Foundation  
Mary & Don Elliman  
Karen S. Erb  
Evolve

Fast Enterprises LLC  
First National Bank of Santa Fe  
Laura Lee & George Gastis  
Katherine Gold / Goldbug  
Golden Triangle Construction, Inc.  
Melanie Grant / Denver Center for International Studies  
Josie & Rollic Heath  
HealthONE-Rocky Mountain Hospital for Children  
Susan & Dave Honeyfield  
Ann Hoyt & David Stolfa  
Humphries Poli Architects  
IKON Office Solutions, Inc.  
Walter Imhoff  
Intertech Plastics  
Intuitive Insurance Corporation  
ISC, Inc.  
Joy Johnson  
Johnson & Wales University  
Kaplan Kirsch & Rockwell LLP  
KeyBank  
klipp  
J. Joshua Kopelman  
Latin American Educational Foundation  
Betsy & Robert Leighton  
Leprino Foods Company  
Richard H. Lewis Family Foundation  
Mary Pat Link & John Strohm  
The Little Tree Fund, a donor advised fund of The Denver Foundation  
LMC Solutions Company  
Texie & Scott Lowery Family  
Janet & Robert Manning  
Diane & Tom Marsh  
Stephen G. McConahey  
McDowell Family Trust  
MDU Resources Foundation  
Merrick & Company  
Merrill Lynch / The Dulitzky-Kauth Group  
Sonia & John Merz

Ronnie Mitzner  
National CineMedia  
Allison Neeland  
Susan & Howard Noble  
Northern Trust  
Oak Tree Foundation  
Oakwood Homes  
Party City  
Patton Boggs LLP  
Nicole Pearce  
Theresa Peña & Matthew Chavkin  
Piper Jaffray & Co.  
PLUS Foundation  
RBC Capital Markets  
Ready Foods, Inc.  
Sara & Eric Resnick  
Rock Bottom Foundation  
Rotberg Comens Booth Foundation  
Susan & Norman Ruggles  
Scripps Howard Foundation  
Semple, Miller, Mooney & Farrington, P.C.  
Sherman & Howard LLC  
Sinton Dairy  
Mary & George Sissel  
Slavens School PTA  
Mary Spillane  
St. Charles Capital, LLC  
Stanley Consultants Charitable Foundation  
Starz Entertainment  
Stifel, Nicolaus & Company, Inc.  
Strear Farms Company, Inc.  
Konnie & Jack Thompson  
Tower One Construction  
United Healthcare  
University of Denver  
Vectra Bank Colorado  
Wagner Equipment Company  
Kristin & Bill Waters  
Carol Weale  
Western Dairy Association

## \$500 to \$999

Anonymous (4)  
Marianne & Gregory Baldwin  
Terri V. Baldwin  
Bankers' Bank of the West  
Charles T. Beaird Foundation

Mary & Robert Bearman  
Mary Lee & Don Beauregard  
Natalie & Jack Blumenthal  
Joan & Larry Brennan  
Kristi & Bud Bullard  
Jan & Mark Bundy  
Mary & Ronald Butz  
Anne Bye Rowe & Frank Rowe  
Lynn & Kelly Condon  
The Deane Family Fund, a donor advised fund of The Denver Foundation  
Denver Hospice  
Linda Daring & Ron Kucic  
Joseph Ekstrom  
Britta Erickson & Richard Turner  
Lisa Farber Miller & David Miller  
Friedman-Klarreich Family Foundation  
David Hart  
Stephanie & Edward Harvey  
Arlene & A. Barry Hirschfeld  
Historic Montclair Community Association  
Dennis Humphries  
Janus-The Matching Gift Center  
Carol B. Lay  
Donna Lynne, DrPH  
Evi & Evan Makovsky  
Kimberly J. Martinez  
Vicki Mattox  
Carol & James Ostermann  
Ponderosa Industries, Inc.  
Ann & Kevin Reidy  
Karen & Andrew Ritz  
Colleen & Brian Smith  
Leslie Stanford & Don V. Bailey  
Martin & Gloria Trotsky Family Foundation  
University of Colorado Denver  
Judy G. Ward  
Wilderness Construction Co.  
Kathy & Jon Zeschin

## \$250 to \$499

Anonymous (1)  
Teri Anderson & William Duffy  
Avenue L Architects, LLC  
Brenda & Jim Billings

Brooke Borgen  
Linda & Wes Brown  
William Browning  
Elizabeth & James Buckley  
Nita & Don Burkhardt  
Cheryl Caldwell  
Carin Chow & Tom Boasberg  
David Clayton  
College in Colorado  
William L. Cook  
Cushman & Wakefield of Colorado, Inc.  
Kristine Deeks  
TJ Donahue  
Richard Duke  
Donna & Rick Eldridge  
EnCana Cares (USA) Foundation  
Lou Anne & Kent Epperson  
Carl Everhart  
Cheryl Fleetwood & Chris Adams  
Holly & Curt Foust  
Thone Gdovin & Phillip Benz  
Alexandria Gerardo & John Hagan  
Russel Givens  
Cindy & David Goldberg  
Joe Halbleib  
Catherine Hance  
Beth A. Hessel-Kirkman  
Jon Hindlemann  
Rebecca Holmes  
Angela Innes & Mark Semenov  
Cheryl & Arthur Karstaedt  
Kevin Kearney  
Maureen & John Kechriotis  
Carrie Lamitie  
Peggy Lehmann, Denver City Councilwoman  
Roland Lyon  
Janet D. MacKenzie  
Brandon A. Malara  
Chris Maliff  
Anne McDonald  
Anabel & Jerome McHugh  
Paul Melinkovich Family Fund  
Donna A. Middlebrooks & Thomas Gougeon  
Christine L. Murphy & Norman R. Mueller  
Elizabeth Neid

Barbara & Richard O'Brien  
Virginia & Perry Peine  
Kelli & Evan Pfaff  
Nicolette & Dean Phillips  
Dean Prina, M.D.  
Marschula & William Renkel  
Sue Renner  
Cari & Eric Riedlin  
Daniel L. Ritchie  
Debra & Michael Roads  
Laurie & Chris Romer  
Rose Community Foundation  
Adam Rosenberg  
Michael Sawyer  
Slaterpaul Architects  
Karyn & George Sparks  
Tina & Jeff Sporkin  
Scott Springer  
Sandra & Kurt Stenmark  
JoAnn Trujillo Hays & Joe D. Hays  
Wal-Mart Foundation  
Elizabeth Warden & Bob Dahlen  
Julie & Wes Williams  
June & Bob Wilson  
Tresa & Antwan Wilson  
Brett Winingham  
Dee Wisor  
Debbie & David Younggren

## Gifts up to \$249

Anonymous (76)  
Jean E. Adler & Bruce Black  
Anna M. Alejo & Shepard Nevel  
Tegan Alexander  
Gerald Anderson  
Jeremy P. Anderson  
Myrta L. Anderson  
Tamara Anderson  
Toshio Ando  
John Andrew  
Reiko & Yoshio Arakawa  
Mary J. Armstrong  
Martha & David Ashmore  
Denice E. & John R. Augelli  
Marti Awad  
Geri & Dick Badler  
Bill Baker  
Martha M. Baker

Margaret Baldwin  
Antonio Barreiro  
Jennifer Barrett  
Jennifer Barton  
Rick Barz  
Bridget Beatty  
Robin Beery & Mark L. Filerman  
Steve Bell  
Christine Benero  
K. Holly Bennett & John M. Lebsack  
Margaret Benton  
Mischa Bettis  
Clara & Chuck Biddlecom  
Elizabeth & Robert Biggs  
Christine K. Blach  
Deborah Blair-Minter  
Jason M. Blauwet  
David Bluth  
Holly & Gerald Bodine  
Dana A. Bohnenkamp  
Alexis & Andy Boian  
Sylvia Bookhardt  
Rae Ann Bories-Easley & Nate Easley  
Libby Bortz & Michael R. Altenberg  
Patricia Bortz & Bradley Schuster  
Valerie Bowler  
Janet Box  
Jeff Braa  
Sean Eugene Bradley  
Joseph Brady  
Stacey & Paul Brady  
Barbara E. Brayton  
Andrew Breen  
Katherine Brennan  
Ellen B. Brettell  
Rebeka Brewbaker  
Edward M. Brown  
Krista & William Brown  
Sara Brown  
William Browning  
Rachel Roe Bruce  
Tracey Brummett  
Rena Brunner  
Richard Bruno  
Christopher A. Buchanan  
Cedric Buchanon  
Mary Kay & Ken Buckius

Debby & Tom Buescher  
 Jan & Mark Bundy  
 Julie A. Burke  
 Davis S. Butler  
 Eric Butz  
 Susan Card  
 Sandra Carter-Duff & Duane H. Duff  
 Jennifer Carver & Gordon Yale  
 Birdie & Russell Casement  
 Mary Anne & John Castellano  
 Barbara Chambers  
 Karen Chapin  
 Therese D. Chavez & Scott D. Murphy  
 Betty & Donald Cheadle  
 Aimee Chong  
 Maureen Clarke  
 Stephen Clawson  
 Phyllis Clements  
 Margaret Clinkscales  
 Adam Cohen  
 Evelyn & Morey Cohen  
 Colburn Hotel & Apartments  
 Cold Front Distribution  
 Catherine Cole  
 Catherine & David Collier  
 Daniel Collins  
 Joann & John Congdon  
 Jo Ann Conroy  
 Janet & Stephen Costello  
 Patricia Covalt  
 Gerald Cowan  
 Jane M. Crisler & Christopher T. Bennett  
 Holly Cummings  
 Steve Cunningham  
 Shannon & Jeffrey Davine  
 Marsha Dawe  
 Gene De Jong  
 Ronald L. Deal  
 Marcy Dean  
 Amanda DeBell  
 Dario DeBenedetti  
 Eric Deffenbaugh  
 Michael DeLoach  
 Katheleen DeMarco  
 Marta & Alan Dominguez  
 Tracy Dorland  
 Marita Dougherty  
 Steve Douglas  
 Audrey & Bernard Douthit

Harriet Downer  
 Jennifer & Nathan Drake  
 Benita Duran  
 Audrey Edwards  
 David Einfeldt  
 Michael Ekedes  
 Nadia El Mallakh  
 Charles Elbot  
 EMC Consulting  
 Judy Endean  
 Carol & Terry Enright  
 Katherine & Russell Erganbright  
 Linda Erickson  
 Kimberly Estes  
 Norma & Jim Faes  
 Katharine Farmer  
 Amy Farnan  
 Shirley Farnsworth  
 Ann B. Fawcett  
 Kirsie Fiedler  
 David Fine  
 First Data Corporation  
 Fran & Mike Fisher  
 Kathleen Fleming  
 David Floyd  
 Margaret & Robert Fomer  
 Michele & Scott Foust  
 Victor Frandsen  
 Robert Franklin, II  
 Mae T. Frederick  
 Ann & Ford Frick  
 Amy & Bernard Friedman  
 Christine Fuentes  
 Mamie Garceo  
 Christina Garcia  
 Josephine & Andrew Garcia  
 Rene C. Garcia  
 Susan & Gregory Geissler  
 Sharon & Mike Geraghty  
 Cristy Giacomini  
 Jeff Giadone  
 Priscilla Gifford  
 Laura Gillespie Lhevine & Paul Lhevine  
 Joann Gilliland  
 Elaine Giromini  
 Barbara Glaser  
 Myrella Goff  
 Steve Goldstein  
 Phillip Gonring  
 Veronica & Hile Goodrich

Virginia Grace  
 Marilyn Graham  
 Georgia L. Gray  
 Arnold L. Greenberg  
 Krista Gregarek  
 Bradley Grippin  
 Laurie Grossefinger & Richard Palinckx  
 Harold Grueskin  
 Mary Hackstaff  
 Margie J. Hahn  
 Grover Hall  
 William C. Hall  
 Jennifer Hallam  
 Simon Hambidge  
 Sharon and Bruce Hann  
 Ken Hansen  
 Leslie Harden  
 Heidi & Kurt Hardin  
 Helen C. Hargis  
 Carol & David Harguth  
 John J. Harrington  
 Jennifer & Luke Harrison  
 Dawn & Stephen Hart  
 Martha & James Hartmann  
 Maria & Andrew Harwood  
 Jean Hatcliff  
 Happy Haynes  
 Lora Hebel  
 The Hecht Foundation  
 Justin Heinlen  
 Norma & Randal Heinz  
 Gail Heitler Klapper & Jack A. Klapper  
 John A. Henry, Jr.  
 Cassie & David Herron  
 Paula Herzmark  
 Amy Highsmith  
 Leslie Hilton  
 Michael Hobbs  
 Diane & Robert Hochstadt  
 Kirk Hoffman  
 Mary & Paul Holleman  
 Holy Horner  
 Mary L. Horvat  
 Diana & Ray Howard  
 Agnes Hoyt  
 Jan Hoyt  
 Joe Hubbard  
 Lauren Hudson-Tenny  
 Sarah & Craig Hughes  
 Martin Hurrieta

Martha & Irfan Hussain  
 Ben Jackson  
 Sherri A. & James W. Jacoby  
 Lara W. Jakubowski & Sandeep Wadhwa  
 Bonnie Jeffers  
 Marilyn Jester  
 Cara & Wil Johnson  
 Clinton A. Johnson  
 Dianne S. Johnson  
 Dorothy Mae Johnson  
 Katherine & William Johnson  
 Toni Jung  
 Wendy & Stephen Kaeuper  
 Cyndi & Ed Kahn  
 Linda Kanamine  
 Dana Kasse  
 John Kaweske  
 Brenda Kazin  
 Lynn Kellogg  
 Megan & Mariner Kemper  
 Cary Kennedy & Saurabh Mangalik  
 Marianne Kenney  
 Sherry & Andrew Kenney  
 Sharon L. Kermiet  
 George Kienlen  
 Linda & Eric Kiker  
 Kiyoshi Kinoshita  
 Terri Kipple  
 Christine Kliment  
 Lucretia & Richard Koeppe  
 Susan Korach  
 Donna C. Kornfeld  
 Sarah S. Krause  
 Linnea Krizsaw & Peter Sherman  
 Betty & Warren Kuehner  
 Douglas Kullerstrand  
 Florene & Malcolm Laird  
 Marcia Q. Lamb & Jackson D. Turnacliff  
 Christina & Stephen Lammernann  
 Genia Larson  
 Deborah K. Larson-Schukar & Ron Schukar  
 Latino Communications LLC  
 Marlene & Robert Lederer  
 Darlene LeDoux  
 Nadine Lee  
 Jane & Leo Lesh  
 Sharon & John Leslie

Harry T. Lewis, Jr.  
 Linda Lidov  
 Harriet Lind  
 Patty Lindauer  
 Maureen & Raymond Lisberger  
 Christy & Christopher Little  
 Michelle Livingston  
 Mary Lombardi  
 L. Eileen Loomis  
 Josefita Lopez  
 Suzanne Loughron  
 Celia & John Low  
 Susan Lozow  
 John Ludwig  
 Paul Ludwig  
 Steve Luebbering  
 Judy & Jay Lutz  
 Scott Mace  
 Vanessa Macias  
 Janet & David MacKenzie  
 Pam Magill  
 Dorothy Major  
 Virginia & Dave Maloney  
 Elizabeth Manning  
 Sheryl Manning  
 Robert Mantooth  
 Adam Margolin  
 Beverly L. Marquez & Thomas Marquez  
 Kim Martel  
 Everett Martinez  
 Patricia Mason  
 Anmarie Masters  
 Layna & Matthew Maxwell  
 Matt Mayhew  
 Claude McAnally  
 Cathy & John McCabe  
 Linda & Phillip McCurdy  
 Susan J. McFarlane  
 Virginia L. McGehee  
 Ruth & Donald McKinley  
 Edward McMillan  
 Dave McNeil  
 Bruce McOuat  
 William K. McQuinn  
 Paul Means  
 Fiona & Daryl Mechem  
 Tammy & Mark Meier  
 Jean & Max Melville  
 Myles Mendoza  
 Nancy C. Mentzer

Jacquelyn Y. Miller  
 Mary Ellen Miller  
 Stacy Miller  
 Helen Moenke  
 Sharon Montgomery  
 Sherri & Bill Morgan  
 Doris Morten  
 Mary Mosher Stathes & Kirk Stathes  
 Michelle & Kerry Moss  
 Jacqueline Kay Mrzlikar  
 Gregory Mueller  
 Donna Munip  
 Julie & Ryan Murgel  
 Sara Murphy  
 Emily & Jonathan Musser  
 B. Solomon Muwanga  
 William Myers, Sr.  
 Chanthy Na  
 Pat & Richard Nearman  
 Steve Nederveld  
 Esther G. Nelson  
 Taylor Nelson  
 Kristin Nelson-Steinhoff  
 James J. Nora, Jr.  
 Glenna Norvelle  
 Jolinda L. Oberly  
 Kyli Olson  
 Mary & Jack Olson  
 Christina Ortiz  
 Martha & Karl Ossentjuk  
 Dan Owens  
 Liz & John Palmquist  
 Andrea R. Paolino  
 Stephen Parce  
 Hester Parrot  
 Patricia H. Pascoe  
 Sarie & Kevin Patterson  
 Anna & Will Payne  
 Kerry & Nathan Pearlman  
 Jeannie & Michael Peppel  
 Alan Peppers  
 Bo Peretto  
 Linée Perroncel  
 Catherine Petersen  
 Lance Peterson  
 Charles Pettit  
 Dorothy & Harry Phillips  
 Barbara Piernot Shull & Dennis Shull  
 Jill Pitner

Vickie Pochi  
 Anne & Adam Poe  
 Lillian & Robert Polski  
 Tonda Potts  
 Elizabeth & George Pray  
 Carol Sue Price  
 Douglas Price  
 Pascale & Daniel Pring  
 Emily Pulver  
 Hafeez Quadri  
 Mary & Chris Quarton  
 Maryjane & Max Raabe  
 Matt Ratterman  
 Connie Rayor  
 Kathryn R. Reisinger  
 Lea Ann Reitzig  
 Phyllis & Frank Rice  
 Jo Ann Rivera  
 Ardel Rivera-Francis  
 Andrew Roberts  
 Linda Roberts Zinn  
 Britney Rochelle  
 Elinor Roller  
 Anthony C. Romeo  
 Beatrice & Roy Romer  
 Thomas Romer  
 Laura Ross  
 Charlotte & Irvin Rubin  
 Anna Rudzinska  
 Kim Rundle  
 Eileen Rutter  
 Lauretta Ruybal  
 Susan & Ken Ryerson  
 Claudia Salvestrin  
 Maureen Sanders  
 Joe Sandoval  
 Erik Sandvold  
 Marlene & John Sbarbaro  
 Lynne Scates  
 Stewart Schley  
 Tracey Schneider  
 Kelly & Paul Schomburg  
 Charles Schweiger  
 Sue Schwellenbach  
 Tawna Schworm  
 Ellen & Andrew Selig  
 Evangeline R. Sena  
 John Senkiw  
 Troy Seyfer  
 Kathleen Sgamma

Douglas Shadbolt  
 Lorni Sharrow  
 E. Clarkson Shaw  
 Marilyn Shaw  
 Julia Shepherd  
 Danny Showers  
 Kathleen Shrum  
 Tim Shutts  
 Stan Siefer  
 Kaye L. Siemers  
 John Simmons  
 W. Jason Simmons  
 Andrew Sirotnak  
 Nina & Tom Sisk  
 Patricia Slaughter  
 Barbara S. Slenger  
 Virginia Smetana  
 Nora B. Smith  
 Gabina Sosa  
 Caroline Spangler  
 Janice & William Spearman  
 Irene P. Spicer  
 Marjorie Spillane  
 Ruth S. Spindle  
 Bonnie Staack  
 Sally Stanley  
 Rachel Starks  
 John Stearns  
 Erica Stetson & Kirk Ward  
 Patricia Stroud  
 Susan & Paul Sugarman  
 James Sugden  
 Doris J. Sullivan  
 Leba Sunshine  
 David A. Suppes  
 Barbara & Chris Swallow  
 Katherine Swan & Bryan Saunders  
 Mary Symonton  
 Alaurice Tafoya Modi  
 Eileen & Joseph Talty  
 Rose Tanaka  
 Jill Taylor  
 John Tenney  
 Kara Thayer  
 Robert Thompson  
 Suzanne Thompson  
 Nancy Thorn  
 Beverly Thygesen  
 Lori Tierney  
 Christine Tippett

Marcia Toll & Gregg Rippey  
 Dianne Tramutola-Lawson  
 Brian Trujillo  
 Tara Trujillo & Miguel Lovato  
 Mary & Michael Tully  
 Melissa Underwood  
 Shelley S. Van Delinder & Jeff M. Rupp  
 Lynn Vannattan & Jerry D. Graves  
 Kelli Varney  
 Nicole Veltze  
 Richard Vigil  
 Victoria Virnich  
 Kimbray von Grosse  
 Marilyn Joyce Walker  
 Joan Wamsley  
 John R. Watson  
 June & Sanford Watzman  
 Marc Waxman  
 Tamara & Kenneth Weil  
 Ceci A. Wells  
 Elaine & Turner West  
 Elizabeth & Stephen Wester  
 Western Union Foundation  
 Milly & Vernon Westphalen  
 Lee White  
 Roxane White & Denis Murstein  
 Joe Wicks  
 Janet K. & E. Patrick Wiesner  
 Natalie Wilkins & Tom Hoaglund  
 Dana Williams  
 Janna Williams  
 Donna & Donald Willis  
 Leigh & Michael Wilson  
 Brett Winingham  
 John Woodhull  
 Robert A. Woodson  
 Joe W. Woodward  
 Charles Wright  
 Linda Wright  
 Judith L. Yaw  
 Kristin Young  
 Lisa & Robert Yurglich  
 Brett Zachman  
 David Zinger  
 Kristin Zinis

**Gifts In Tribute**  
 We extend special thanks to donors who made gifts in honor of the following:

Marcy & Bruce Benson  
 Rob Cohen  
 Denver Citywide Marching Band  
 DPS Student Board of Education  
 DPS Retired Teachers  
 Nellye French  
 Francisco Garcia  
 Godzman Elementary  
 Megan Hartmann  
 Erin Hartmann Sun  
 John Livingston  
 Sue & Leigh Lutz  
 Vernon L. Morten  
 Martha Records & Rich Rainaldi  
 Kristin Richardson  
 Velma Rose  
 Kelly Schiff  
 Lisa Schiff Relou  
 Marie Sirotnak  
 James Wester  
 Les & Marianne Woodward

**Gifts In Memoriam**  
 We also extend special thanks to donors who made gifts in memory of the individuals below:

Arthur M. Bragg  
 Joan Collins  
 Irma Cuneo  
 Maurice Farnan  
 Zelda Gutman  
 Rocky Hatcliff  
 Mary Olson  
 Kay Schomp

# DPS FOUNDATION 2008 – 2009

## BOARD OF DIRECTORS AS OF JUNE 2009

**Kristin Richardson, Chair**  
Community Leader

**Francisco Garcia, Vice Chair**  
Garcia International, LLLP

**Leslie Mitchell, Treasurer**  
FirstBank of Cherry Creek

**Cathy McClain Finlon, Secretary**  
Denver Art Museum

**Scott Binder**  
Comcast

**Joe Blake**  
Colorado State University

**Tom Boasberg**  
Superintendent, Denver Public Schools

**Brooke Brown**  
Carson Foundation

**Scott Carpenter**  
Anschutz Investment Company

**Robert Cohen**  
The IMA Financial Group, Inc.

**Tom Gamel**  
Rockmont Capital Partners, Ltd.

**Noel Ginsburg**  
Intertech Plastics

**Eric Holt**  
Bessemer Trust

**Bruce Hoyt**  
St. Charles Capital &  
DPS Board of Education

**Mariner Kemper**  
UMB

**Donna Lynne**  
Kaiser Permanente

**Margot McClendon Pinto**  
Community Leader

**Sharon Montgomery**  
Qwest

**Rich Rainaldi**  
CiviCore

**Jeff Ross**  
Ross Aviation

**Ronald Williams**  
Gary-Williams Energy

## DPS FOUNDATION STAFF

**Kristin Heath Colon**  
President & CEO

**Tiffany Cooley**  
Development Director

**Laci Gettings**  
Office Assistant

**Arlene Guillen**  
Office Manager/Executive Assistant

**Michele Kilen**  
Development Associate

**Alison Kolwaite**  
Senior Director of Development

**Kim Martinez**  
Controller

**Natalie Wilkins**  
Communications Director



## ABOUT OUR PHOTOGRAPHERS

PHOTOGRAPHY IN THIS REPORT WAS PROVIDED BY TALENTED STUDENTS AT THOMAS JEFFERSON HIGH SCHOOL.

From left to right: Rebecca Holt, Anna Becker, Gustavo Garcia, and Mia Nogueira. Our thanks to these students and their photography teacher Mr. Jeff Coleman.

